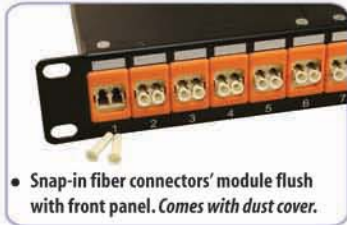
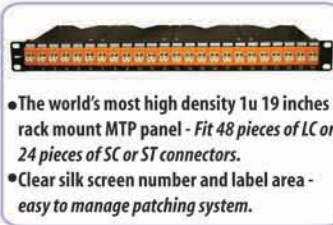


FEATURES AND BENEFITS



- Snap-in fiber connectors' module flush with front panel. Comes with dust cover.



- The world's most high density 1u 19 inch rack mount MTP panel - Fit 48 pieces of LC or 24 pieces of SC or ST connectors.
- Clear silk screen number and label area - easy to manage patching system.



- Compact short enclosure design - easy to mount on any rack.
- Convenient to expansion in the future, eliminate expensive conventional rack mount chassis enclosure.



- MTP coupler angle mounted in the rear of enclosure - reduce MTP cable bending ratio

FIBER CONNECTORS



MTP/MPO



DLC (Duplex LC)

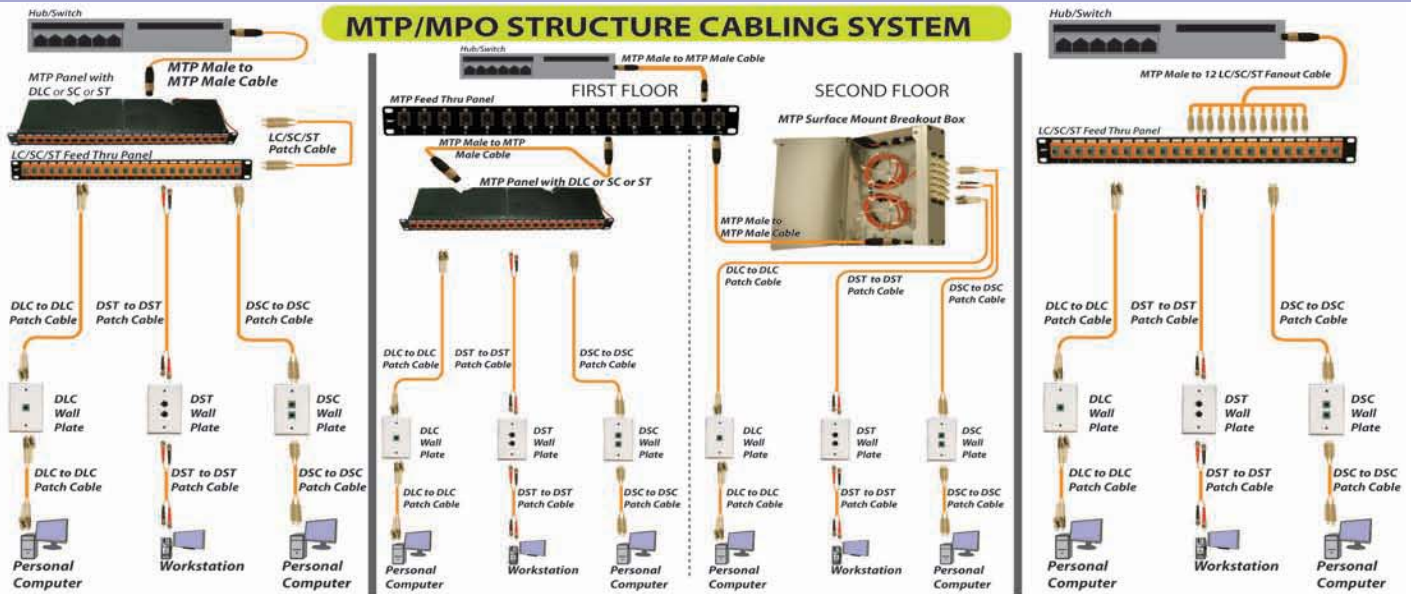


SC



ST

APPLICATION DIAGRAM



DUPLIX LC MTP / MPO BREAKOUT PANEL

62.5/125 Multimode 24 Ports	62.5/125 Multimode 12 Ports
50/125 Multimode 24 Ports	50/125 Multimode 12 Ports
10G Multimode 24 Ports	10G Multimode 12 Ports
Single Mode 24 Ports	Single Mode 12 Ports

PART NUMBER	DESCRIPTION	1-4	5-9	10+
898-DLC-24-M	24 Ports, 4 MTP Breakout Panel, 62.5/125 Multimode	\$845.52	\$807.09	\$749.44
898-DLC-12-M	12 Ports, 2 MTP Breakout Panel, 62.5/125 Multimode	\$437.15	\$417.28	\$387.47
898-DLC-24-5M	24 Ports, 4 MTP Breakout Panel, 50/125 Multimode	\$845.52	\$807.09	\$749.44
898-DLC-12-5M	12 Ports, 2 MTP Breakout Panel, 50/125 Multimode	\$437.15	\$417.28	\$387.47
898-DLC-24-10G	24 Ports, 4 MTP Breakout Panel, 10 G Multimode	\$855.62	\$816.73	\$758.39
898-DLC-12-10G	12 Ports, 2 MTP Breakout Panel, 10 G Multimode	\$442.20	\$422.10	\$391.95
898-DLC-24-S	24 Ports, 4 MTP Breakout Panel, Single Mode	\$1,069.46	\$1,020.85	\$947.93
898-DLC-12-S	12 Ports, 2 MTP Breakout Panel, Single Mode	\$549.12	\$524.16	\$486.72

DUPLIX SC MTP / MPO BREAKOUT PANEL

62.5/125 Multimode 12 Ports	62.5/125 Multimode 6 Ports
50/125 Multimode 12 Ports	50/125 Multimode 6 Ports
10G Multimode 12 Ports	10G Multimode 6 Ports
Single Mode 12 Ports	Single Mode 6 Ports

PART NUMBER	DESCRIPTION	1-4	5-9	10+
898-DSC-12-M	12 Ports, 2 MTP Breakout Panel, 62.5/125 Multimode	\$410.85	\$392.18	\$364.17
898-DSC-6-M	6 Ports, 1 MTP Breakout Panel, 62.5/125 Multimode	\$221.46	\$211.39	\$196.29
898-DSC-12-5M	12 Ports, 2 MTP Breakout Panel, 50/125 Multimode	\$410.85	\$392.18	\$364.17
898-DSC-6-5M	6 Ports, 1 MTP Breakout Panel, 50/125 Multimode	\$221.46	\$211.39	\$196.29
898-DSC-12-10G	12 Ports, 2 MTP Breakout Panel, 10 G Multimode	\$415.87	\$396.97	\$368.61
898-DSC-6-10G	6 Ports, 1 MTP Breakout Panel, 10 G Multimode	\$223.98	\$213.80	\$198.53
898-DSC-12-S	12 Ports, 2 MTP Breakout Panel, Single Mode	\$446.55	\$426.25	\$395.80
898-DSC-6-S	6 Ports, 1 MTP Breakout Panel, Single Mode	\$239.29	\$228.41	\$212.10