

CAT5E RJ-45, 110-TYPE PATCH PANEL

- ETL/UL Cat5E verified; UL 1863.
- Exceeds EIA/TIA TSB 40A connecting hardware specification.
- Space saving, high density 19" panel design.
- PCB type 110 termination.



ORDER CODE	DESCRIPTION	1-4	5-9	10+
01BR-12	Cat5E RJ45 to 110 Patch Panel, 12 Port, 1U (1.75" high)	\$35.20	33.60	31.20
01BR-24	Cat5E RJ45 to 110 Patch Panel, 24 Port, 1U (1.75" high)	49.28	47.04	43.68
01BR-48	Cat5E RJ45 to 110 Patch Panel, 48 Port, 2U (3.50" high)	79.20	75.60	70.20

CAT5E SUPER HIGH DENSITY 110 PATCH PANEL



- Installation-friendly, upper and lower level ports are built separately in a strain relief tray
- User-friendly hand-screw for releasing/fastening the upper level, requiring no tools.
- Helps to lower the hardware cost by putting 48 ports in 1U panel.



ORDER CODE	1-4	5-9	10+
01BS-48	\$169.84	162.12	150.54

CAT5E, 89D BRACKET TYPE 110 PANEL, 12-PORT

- 89D Type bracket, surface mountable.
- For small voice and data connections.

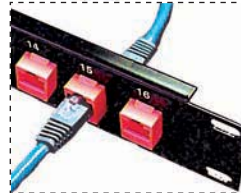
ORDER CODE	WIRING	1-9	10-19	20+
01BR-12-WM	258A Wiring	\$31.68	30.24	28.08



CAT5E RJ-45 FEED-THROUGH PANEL

- 19" panel, loaded with Cat5E in-line couplers.

ORDER CODE	# PORTS	HEIGHT	1-4	5-9	10+
01E-08	8	1.75"	\$73.92	70.56	65.52
01E-12	12	1.75"	96.80	92.40	85.80
01E-16	16	1.75"	119.68	114.24	106.08
01E-24	24	3.50"	168.96	161.28	149.76
01E-32	32	3.50"	205.92	196.56	182.52
01E-48	48	5.25"	306.24	292.32	271.44



CAT5E, RJ-45 FEED THROUGH PANEL

- 19" wide black color, 1/16" thick steel panel.
- Clear white silk screen number on the panel.
- Cat5E, RJ-45 in-line coupler snapped on to the panel.
- Black color bezels hold the coupler flush with the front panel.



ORDER CODE	# OF PORTS	RACK SPACE #	HEIGHT	1-4	5-9	10+
015-008-RJ45	8	1	1.75"	\$73.92	70.56	65.52
015-012-RJ45	12	1	1.75"	98.56	94.08	87.36
015-016-RJ45	16	1	1.75"	123.20	117.60	109.20
015-024-RJ45	24	2	3.50"	176.00	168.00	156.00
015-032-RJ45	32	2	3.50"	220.00	210.00	195.00
015-048-RJ45	48	3	5.25"	308.00	294.00	273.00

1U (1 3/4") & 2U (3 1/2") HIGH DENSITY 16 / 24 / 48-PORT FEED-THRU PANEL

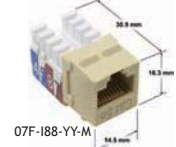
- 19" wide black color, 1/8" thick steel panel.
- Clear white silk screen number on the panel.
- Mini couplers can be loaded: RJ-12, RJ-45, Cat5E, Cat6.



ORDER CODE	DESCRIPTION	1-4	5-9	10+
016-016-B	1U 16-Port Blank Panel (Flush Type)	\$30.80	29.40	27.30
016-024-B	1U 24-Port Blank Panel (Flush Type)	35.20	33.60	31.20
016-048-B	2U 48-Port Blank Panel (Flush Type)	49.28	47.04	43.68
016-016-C5E	1U 16-Port Panel - Cat5E Couplers Loaded	105.60	100.80	93.60
016-024-C5E	1U 24-Port Panel - Cat5E Couplers Loaded	174.24	166.32	154.44
016-048-C5E	2U 48-Port Panel - Cat5E Couplers Loaded	308.00	294.00	273.00

90° & 180° MINI KEYSTONE JACKS

- Compliant with EIA / TIA specifications.
- Dual color-coded labels for 568A and 568B wiring schemes.
- Uniquely patented PCB (Printed Circuit Board) design.
- Snap-in type enclosure allows easy mounting onto wall plates or panels.
- Compact style, fits into 016-024 / 016-048 panels.



ORDER CODE	DESCRIPTION	1-49	50-99	100+
07F-166-YY-M	RJ-12 90° Mini Keystone Jack	1.94	1.85	1.72
07B-188-YY-M	Cat5E 180° Mini Keystone Jack	2.64	2.52	2.34
07F-188-YY-M	Cat5E 90° Mini Keystone Jack	2.46	2.35	2.18

XX = Color	WH	GY	BK	BL	GN	RD	OR	YL	IV
------------	----	----	----	----	----	----	----	----	----

5-PAIR 110 PUNCH DOWN TOOL

- Reduce 110-type LAN and telecommunication distribution system installation time.
- Used on both cable and cross-connect sides of 110-type termination block.
- Terminates and cuts up to five pairs of UTP at the same time.
- Rubber handle design provides comfortable use.
- Features reversible blades for seating conductors without cutting.



ORDER CODE	1-9	10-19	20+
061-315DR	\$80.96	77.28	71.76

TERMINATION TOOL FOR CAT5E 180° TOP-ENTRY MINI KEYSTONE JACK

- Termination and Wire-Cutting Tool for Top-Entry Keystone Jack Module
- Works with Cat5e 180° Mini Keystone Jacks (P/N: 07B-188-YY-M)



ORDER CODE	1-9	10-19	20+
061-07B-OR	\$51.92	49.56	46.02



TERMINATION TOOL FOR CAT5E 90° RIGHT-ANGLED MINI KEYSTONE JACK

- Termination and Wire-Cutting Tool for Right-Angled Keystone Jack Module
- Works with Cat5e 90° Mini Keystone Jacks (P/N: 07F-188-YY-M)



ORDER CODE	1-9	10-19	20+
061-07F-BL	\$51.92	49.56	46.02



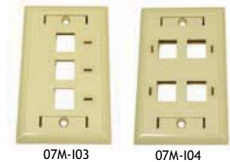
FACE PLATES (07M)

MULTI-PORT FACE PLATES (07M)

- Single gang face plates with 1/2/3/4/6 cutouts, Double gang face plates with 4/8 cutouts.
- Built-in recessed designation strips with clear plastic covers for system or station ID.
- Attachable color icon and sticker type label.



ORDER CODE	# CUTOUTS	# GANG	1-49	50-99	100+
07M-101-XX	1	Single	\$0.79	0.76	0.70
07M-102-XX	2	Single	0.79	0.76	0.70
07M-103-XX	3	Single	0.79	0.76	0.70
07M-104-XX	4	Single	0.79	0.76	0.70
07M-106-XX	6	Single	0.79	0.76	0.70
07M-124-XX	4	Double	1.94	1.85	1.72
07M-128-XX	8	Double	1.94	1.85	1.72



XX = Color	WH = White	GY = Gray	IV = Ivory
------------	------------	-----------	------------



FACE PLATES (071)

FACE PLATES (071)

- Single gang face plates with 1/2/3/4/6 cutouts.
- Double gang face plates with 12 cutouts.



ORDER CODE	DESCRIPTION	1-49	50-99	100+
071-101-XX	1 Cutout	\$0.60	0.57	0.53
071-102-XX	2 Cutouts	0.60	0.57	0.53
071-103-XX	3 Cutouts	0.60	0.57	0.53
071-104-XX	4 Cutouts	0.60	0.57	0.53
071-106-XX	6 Cutouts	0.60	0.57	0.53
071-1212-IV/WH	12 Ports Double Gang Face Plate	1.94	1.85	1.72

XX = Color	WH = White	GY = Gray	IV = Ivory
------------	------------	-----------	------------